

## High Speed Hair Dryer



Instruction Manual

### Introduction

Thank you for purchasing the BEAUTURAL High Speed Hair Dryer. This instruction manual contains important information about safety, usage, and disposal of your hair dryer. Use the product only as described and keep this manual for future reference. If you sell this hair dryer or pass it on, give this manual to the new owner.

**READ ALL INSTRUCTIONS BEFORE USING**  
**KEEP AWAY FROM WATER**

### Safety Instruction

**Danger** - As with most electrical products, electric parts are electrically live even when the product is switched off. To reduce the risk of injury or death by electrical shock:

1. Always disconnect the hair dryer from power immediately after use.
2. **Do not** use the dryer while bathing.
3. **Do not** place or store the dryer where it can fall or be pulled into a tub or sink.
4. **Do not** place the dryer in, or drop into, water or other liquid.
5. If the dryer falls into water, disconnect it from power immediately. **Do not** reach into the water.

Warning - To reduce the risk of burns, electrocution, fire or injury to persons:

1. This hair dryer should never be left unattended when plugged in. **Do not** pull, twist or wrap the power cord around the dryer.
2. This dryer should not be used by, on or near children or individuals with certain disabilities.
3. Only use this product for its intended purpose as described in this manual. **Do not** use attachments not recommended by the manufacturer.
4. Never operate this dryer if it has a damaged cord or plug, if it is not working properly, or if it has been damaged or dropped into water.
5. Keep the power cord away from heated surfaces. **Do not** pull, twist or wrap the power cord around the dryer.

6. Never block the air openings of the dryer or place it on a soft surface, such as a bed or couch, where lint or hair can enter the dryer's openings.
7. Never use the drying while sleepy or severely fatigued.
8. Never drop or insert any object into any of the dryer's openings.
9. **Do not** use the dryer outdoors or operate where aerosol (spray) products are being used or where oxygen is being administered.
10. **Do not** use an extension cord with this dryer.
11. **Do not** direct hot air toward eyes or other heat-sensitive body areas.
12. Attachments may be hot during use. Allow them to cool before handling.
13. **Do not** place the dryer on any surface while it is operating.
14. While using the dryer, keep hair away from the air inlets.
15. **Do not** operate with a voltage converter.
16. This product is not intended for use by people with limited physical, sensory, or mental abilities or persons without required knowledge or experience. Product use by such people is allowed only under the supervision of the person or guardian responsible for their safety, with the guardian providing clear instructions on the device's operation.

### SAVE THESE INSTRUCTIONS

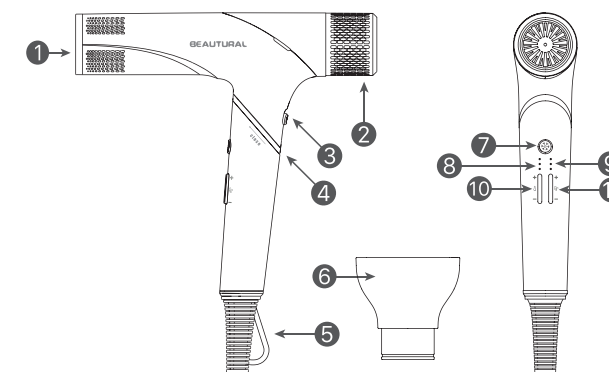
- When the appliance is used in a bathroom, unplug it after use since the proximity of water presents a hazard even when the appliance is switched off;
- For additional protection, the installation of a residual current device (RCD) having a rated residual operating current not exceeding 30 mA is advisable in the electrical circuit supplying the bathroom. Ask your installer for advice.



#### WARNING

**Do not use this appliance near bathtubs, showers, basins or other vessels containing water.**

### Product Description



- |                            |                                    |
|----------------------------|------------------------------------|
| 1. Air Outlet              | 7. Cool Shot Button                |
| 2. Rear Air Inflow Grille  | 8. Temperature Indicator Light     |
| 3. ON/OFF Switch           | 9. Airflow Speed Indicator Light   |
| 4. Swivel Line             | 10. Temperature Selection Button   |
| 5. Hanging Loop            | 11. Airflow Speed Selection Button |
| 6. Concentrator Attachment |                                    |

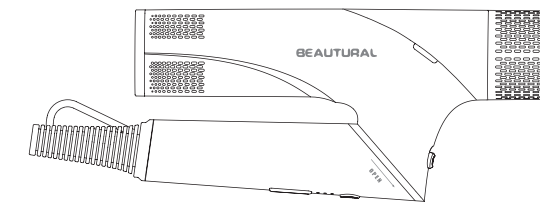
### Included Item

- |                         |                           |
|-------------------------|---------------------------|
| 1xHigh Speed Hair Dryer | 1xConcentrator Attachment |
| 1xInstruction Manual    | 1xStorage Bag             |

Before using the BEAUTURAL High Speed Hair Dryer for the first time, check the package contents to ensure all parts are free of visible damage.

### Operating Instructions

#### Handle Folding Instructions



The hairdryer in the package is in a folded position. Before unfolding or folding the hair dryer, make sure that it is unplugged from the electric outlet and the hair dryer barrel is cool.

1. Hold the dryer barrel with your left hand and grasp the dryer handle below the swirl line with your right hand.
2. Turn the handle clockwise to unfold.
3. After using the product, turn the handle counterclockwise to fold the dryer.

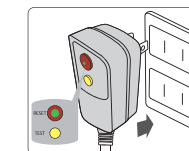
#### ALCI Plug

The hairdryer is equipped with Appliance Leakage-Current Interrupter (ALCI) to avoid risk of electric shock. Therefore, **ALWAYS** test the ALCI unit before each use to make sure the safety device is working:

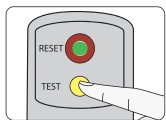
Ensure you check the ALCI safety feature every time you use the product. The purpose of this test is to make sure the safety device is working.

Plug in to the socket, and then the indicator light on the RESET button will turn on.

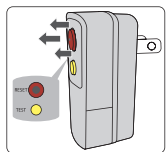
**Note:** The ALCI plug is only compatible with North America. If you travel outside North America, you will need a travel plug adapter for that region.



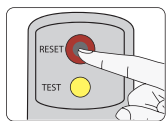
Press the TEST button.



The RESET button will pop out, and the indicator light on the RESET button will turn off. If the RESET button fails to pop out, check the plug connection. If the problem persists, **DO NOT** use the appliance.



Press the RESET button again for use.



### Turn on/Turn off:

Slide the ON/OFF Switch from 0 to I to turn on the hair dryer. After use, slide the switch downwards to turn it off.

### Choose Your Preferred Temperature and Speed

When first switched on, the hair dryer is set with both air flow and temperature at Maximum.

Choose the desired airflow speed and temperature by pressing the Airflow Selection Button and Temperature Selection Button on the handle.

Just press the Cool Shot Button at any time to quickly switch to the cool air state, and press it again to immediately return to the previous setting.

The LED Lights indicate which settings you are using.



## Drying and Styling Your Hair

1. Always towel dry hair to remove excess water before using the hair dryer.
2. Use the hair dryer on high heat/fast speed to remove excess moisture from the hair.
3. When hair is almost dry, lower the heat and airflow speed of the hair dryer to style hair.
4. Once the desired style has been achieved, press the cool shot button to use cool air to better hold the style in place.
5. Once drying and styling is finished, slide the ON/OFF Switch to the "0" position and unplug the hair dryer.

## Concentrator Attachment

For precise styling, attach the concentrator attachment onto the hair dryer. The concentrator attachment will force the air flow to be directed straight at a brush or comb for improved styling.

To attach the concentrator attachment, simply press the concentrator into the air outlet until it snaps into place.

To remove it, allow the dryer and attachment to cool and then gently pull it away from the dryer.

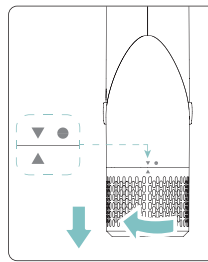
## Negative Ion Function

This hair dryer produces ions and releases them through the dryer's air flow to help fight frizz and bring out hair's natural shine.

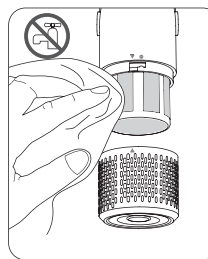
## Filter Cleaning

Due to the suction generated by high-speed operation, dust, particles, and other debris may be clogged on the mental filter under the Rear Air Inlet Grille. To extend the appliance's lifespan and efficiency, regularly open the Rear Air Inlet Grille as described below and clean the filter.

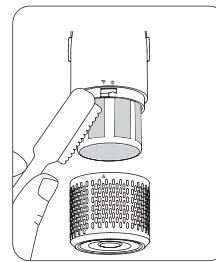
**Warning:** Make sure the machine is unplugged during the cleaning process!



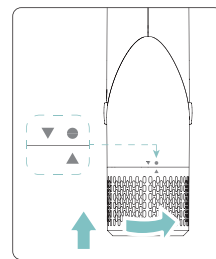
Hold the handle of the hairdryer firmly, and gently rotate the Rear Air Intake Grille counter-clockwise to unlock the grille.



**DO NOT** use water to clean the filter. **DO NOT** apply too much pressure to the filter mesh.



Use a dry lint-free brush to remove any dust or debris from both the filter and the grille.



Put the grille back into position, ensuring the correct alignment. Rotate clockwise to lock before use.

## Exterior Maintenance and Care

1. Always remove the power cable plug from the power outlet and let the machine cool completely before cleaning.
2. The hair dryer may be cleaned by wiping it with a damp cloth.
3. **DO NOT** immerse the hair dryer in water or other liquids when cleaning it.
4. Make sure the hair dryer is completely cool and dry before packing it for travel or storage.

## Specifications

Model: 1-MR07US01

Rated Voltage: AC 100-127V/220-240V

Rated Frequency: 50/60Hz

Rated Power: 1000-1600W/1450-1600W



The appliance's packaging is made from environmentally friendly material and can be disposed of at your local recycling plant.

## 24-Hour Customer Service & 2-Year Warranty

Phone: +1 (909) 391-3888  
 (Mon-Fri 9:00am - 5:00pm PST)  
 US: ushelp@1byonebros.com  
 CA: cahelp@1byonebros.com  
 Website: www.1byonebros.com

If any accessory is missing from the package or there are any issues with the product, please get in touch with our official customer service. We will be pleased to serve you!

1byone Products Inc.  
 1230 E Belmont Street, Ontario, CA, USA 91761  
 Customer Service: +1 909-391-3888  
 www.1byonebros.com

Made in China